

2011 Bahía de Samaná, Rep. Dominicana. Avistamientos de Ballenas Jorobadas por el Centro para la Conservación y Eco-desarrollo de la Bahía de Samaná y su Entorno - CEBSE, Inc.

2011 Samaná Bay, Dominican Republic. Humpback Whale Sightings by the Center for the Conservation and Eco-development in Samaná Bay and its Surroundings - CEBSE, Inc.



04032011saef2

GBDO2011_001



04032011saef2

GBDO2011_001



09022011sasc1

GBDO2011_002



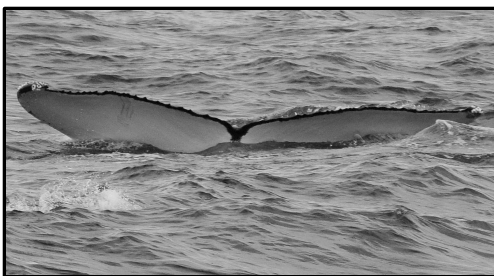
09022011sasc1

GBDO2011_002



24022011sasc1

GBDO2011_003



24022011sasc1

GBDO2011_003



16012011sasc

GBDO2011_004 NAHWC#3005



16012011sayl2

GBDO2011_004



02032011sasc4

GBDO2011_005



02032011sasc4

GBDO2011_005



04032011saef1

GBDO2011_006



04032011saef1

GBDO2011_006



27012011saef1

GBDO2011_007 NAHWC#1501



24022011sasc1

GBDO2011_008 (MOGUL)



01032011sasc2

GBDO2011_009



08032011saor1

GBDO2011_080

- Fotos/Photos: Elodie Fernández (EF); Katerin Noesí (KN); Lenny Moris (LM); Maria Sarhani (MS); Nadja Wegfahrt (NW); Omar Reynoso (OR); Sarah Celano (SC); Stéphane Hennion (SH); Yolanda León (YL).

- (*) Cola de una madre vista con su ballenato nacido en la Bahía de Samaná en el 2011 / Fluke from a mother seen with her calf who was born in Samaná Bay in 2011.C

2011 Bahía de Samaná, Rep. Dominicana. Avistamientos de Ballenas Jorobadas por el Centro para la Conservación y Eco-desarrollo de la Bahía de Samaná y su Entorno - CEBSE, Inc.

2011 Samaná Bay, Dominican Republic. Humpback Whale Sightings by the Center for the Conservation and Eco-development in Samaná Bay and its Surroundings - CEBSE, Inc.



18012011sasc1 GBD02008_005



01022011sasc2 GBD02011_011



02022011saef1 GBD02011_012



12032011sash1 GBD02011_013



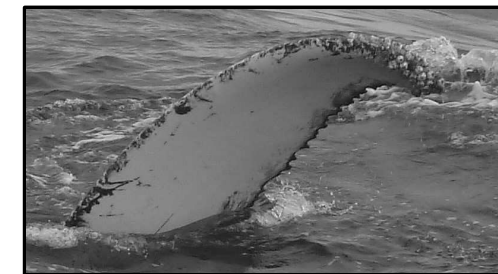
16022011sanw2 GBD02011_014



12022011sasc GBD02009_058



21022011saef1 GBD02011_016



14022011sakn1 GBD02011_017



14022011sakn1 GBD02011_017



08032011saor2 GBD02011_018



20022011sasc GBD02011_019 NAHWC#7187



21022011sasc1 GBD02011_020



21022011sasc1 GBD02011_020



28012011sasc1 GBD02011_021



03022011sasc1 GBD02011_022



30012011saef1 GBD02011_023

- Fotos/Photos: Elodie Fernández (EF); Katerin Noesí (KN); Lenny Moris (LM); Maria Sarhani (MS); Nadja Wegfahrt (NW); Omar Reynoso (OR); Sarah Celano (SC); Stéphane Hennion (SH); Yolanda León (YL).

- (*) Cola de una madre vista con su ballenato nacido en la Bahía de Samaná en el 2011 / Fluke from a mother seen with her calf who was born in Samaná Bay in 2011.C

2011 Bahía de Samaná, Rep. Dominicana. Avistamientos de Ballenas Jorobadas por el Centro para la Conservación y Eco-desarrollo de la Bahía de Samaná y su Entorno - CEBSE, Inc.

2011 Samaná Bay, Dominican Republic. Humpback Whale Sightings by the Center for the Conservation and Eco-development in Samaná Bay and its Surroundings - CEBSE, Inc.



08022011saef1

GBDO2011_024



15022011saef1

GBDO2011_025*



15022011sasc1

GBDO2011_025*



23012011sasc1

GBDO2011_026



23012011sasc1

GBDO2011_026



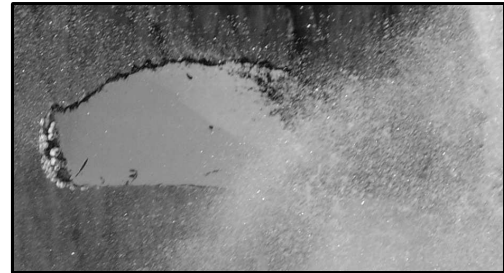
09032011sams1

GBDO2011_027*



23022011saef2

GBDO2011_028



24012011sasc1

GBDO2011_029*



30012011sasc1

GBDO2011_030



17012011saef1

GBDO2011_031



17012011saef1

GBDO2011_032



19012011saef2

GBDO2011_033



19012011saef2

GBDO2011_033



05022011sasc2 GBDO2011_034 (SPINE)



27012011sasc2

GBDO2011_035



27012011sasc1 GBDO2011_036 NAHWC#3985

- Fotos/Photos: Elodie Fernández (EF); Katerin Noesí (KN); Lenny Moris (LM); Maria Sarhani (MS); Nadja Wegfahrt (NW); Omar Reynoso (OR); Sarah Celano (SC); Stéphane Hennion (SH); Yolanda León (YL).

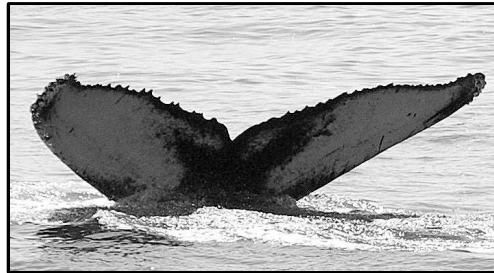
- (*) Cola de una madre vista con su ballenato nacido en la Bahía de Samaná en el 2011 / Fluke from a mother seen with her calf who was born in Samaná Bay in 2011.C

2011 Bahía de Samaná, Rep. Dominicana. Avistamientos de Ballenas Jorobadas por el Centro para la Conservación y Eco-desarrollo de la Bahía de Samaná y su Entorno - CEBSE, Inc.

2011 Samaná Bay, Dominican Republic. Humpback Whale Sightings by the Center for the Conservation and Eco-development in Samaná Bay and its Surroundings - CEBSE, Inc.



27012011sasc1



GBDO2011_036 16012011sayl1 GBDO2011_037 (SCYLLA08CALF)



08022011saef1

GBDO2011_038



16022011sanw2

GBDO2011_039



17022011sanw3 GBDO2011_040 (PIVOT)



16012011sayl3

GBDO2011_041



16012011sayl3

GBDO2011_041



16012011sayl4

GBDO2011_042



16012011sayl4

GBDO2011_042



18012011saef1

GBDO2011_043



19012011sakn4

GBDO2011_044 (JIGGER)



19012011saef1

GBDO2011_045

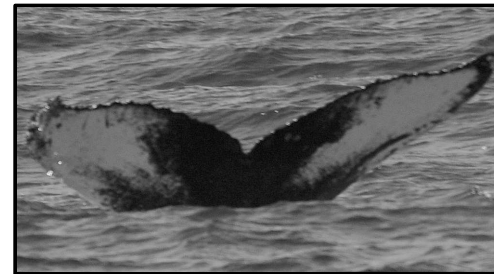


13032011salm1

GBDO2011_079



19012011sasc1 GBDO2011_046 (SCYLLA)



21012011sasc1

GBDO2011_047



16012011sayl4

GBDO2011_048

- Fotos/Photos: Elodie Fernández (EF); Katerin Noesí (KN); Lenny Moris (LM); Maria Sarhani (MS); Nadja Wegfahrt (NW); Omar Reynoso (OR); Sarah Celano (SC); Stéphane Hennion (SH); Yolanda León (YL).

- (*) Cola de una madre vista con su ballenato nacido en la Bahía de Samaná en el 2011 / Fluke from a mother seen with her calf who was born in Samaná Bay in 2011.C

2011 Bahía de Samaná, Rep. Dominicana. Avistamientos de Ballenas Jorobadas por el Centro para la Conservación y Eco-desarrollo de la Bahía de Samaná y su Entorno - CEBSE, Inc.

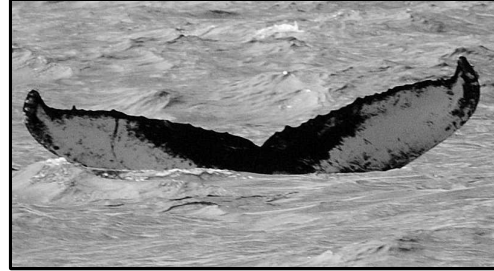
2011 Samaná Bay, Dominican Republic. Humpback Whale Sightings by the Center for the Conservation and Eco-development in Samaná Bay and its Surroundings - CEBSE, Inc.



23022011saef2 GBDO2011_049



27012011saef1 GBDO2011_050



14032011saef2 GBDO2011_051



04032011salm1 GBDO2011_051



22022011sasc2 GBDO2011_052 NAHWC#0229



14022011sanw2 GBDO2011_053



31012011saef1 GBDO2011_054 (TECTONIC)



09032011saef1 GBDO2011_055



03032011saef1 GBDO2011_056



23032011saef1 GBDO2011_057



21012011sasc1 GBDO2011_047



21012011sasc1 GBDO2011_047



11022011sasc1 GBDO2011_059 (PERMAFROST)



13022011sasc1 GBDO2011_060



16012011sasc GBDO2011_061



16012011sayl3 GBDO2011_061

- Fotos/Photos: Elodie Fernández (EF); Katerin Noesí (KN); Lenny Moris (LM); Maria Sarhani (MS); Nadja Wegfahrt (NW); Omar Reynoso (OR); Sarah Celano (SC); Stéphane Hennion (SH); Yolanda León (YL).

- (*) Cola de una madre vista con su ballenato nacido en la Bahía de Samaná en el 2011 / Fluke from a mother seen with her calf who was born in Samaná Bay in 2011.C

2011 Bahía de Samaná, Rep. Dominicana. Avistamientos de Ballenas Jorobadas por el Centro para la Conservación y Eco-desarrollo de la Bahía de Samaná y su Entorno - CEBSE, Inc.

2011 Samaná Bay, Dominican Republic. Humpback Whale Sightings by the Center for the Conservation and Eco-development in Samaná Bay and its Surroundings - CEBSE, Inc.



16012011sasc GBDO2011_062



05032011saef1 GBDO2011_063*



14022011sanw2 GBDO2011_064 (HIMALAYA)



16022011saef1 GBDO2011_065* (PARTITION)



19012011sasc3 GBDO2011_066



19012011sasc3 GBDO2011_066



02032011sasc2 GBDO2011_067



13022011sasc1 GBDO2011_068



13022011saef1 GBDO2011_068 (ASTERISK)



09022011sasc1 GBDO2011_069



08022011saef1 GBDO2011_070



08022011saef1 GBDO2011_070



30012011saef1 GBDO2011_071



12032011sash1 GBDO2011_072 (NUAGES)



19022011sasc4 GBDO2011_073*



22022011sasc1 GBDO2011_073*

- Fotos/Photos: Elodie Fernández (EF); Katerin Noesí (KN); Lenny Moris (LM); Maria Sarhani (MS); Nadja Wegfahrt (NW); Omar Reynoso (OR); Sarah Celano (SC); Stéphane Hennion (SH); Yolanda León (YL).

- (*) Cola de una madre vista con su ballenato nacido en la Bahía de Samaná en el 2011 / Fluke from a mother seen with her calf who was born in Samaná Bay in 2011.C

2011 Bahía de Samaná, Rep. Dominicana. Avistamientos de Ballenas Jorobadas por el Centro para la Conservación y Eco-desarrollo de la Bahía de Samaná y su Entorno - CEBSE, Inc.

2011 Samaná Bay, Dominican Republic. Humpback Whale Sightings by the Center for the Conservation and Eco-development in Samaná Bay and its Surroundings - CEBSE, Inc.



22022011sasc2

GBDO2011_074



22022011sasc2

GBDO2011_074



20022011sasc

GBDO2011_075 (NOTCHY)



20022011sasc

GBDO2011_075



17022011sanw3

GBDO2011_076



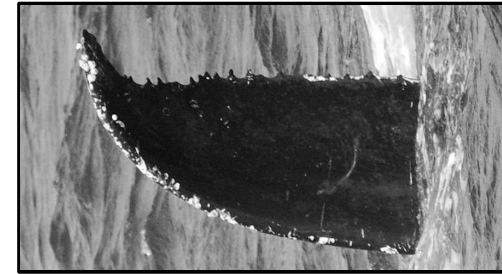
02022011saef1

GBDO2011_077



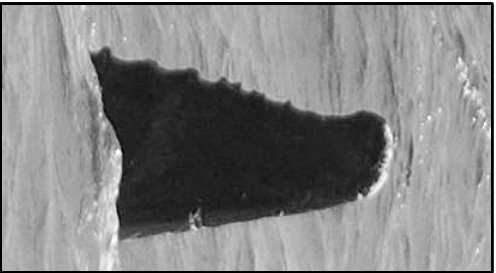
02022011saef1

GBDO2011_077



07022011saef1

GBDO2011_078*



07022011saef1

GBDO2011_078*

- Fotos/Photos: Elodie Fernández (EF); Katerin Noesí (KN); Lenny Moris (LM); Maria Sarhani (MS); Nadja Wegfahrt (NW); Omar Reynoso (OR); Sarah Celano (SC); Stéphane Hennion (SH); Yolanda León (YL).

- (*) Cola de una madre vista con su ballenato nacido en la Bahía de Samaná en el 2011 / *Fluke from a mother seen with her calf who was born in Samaná Bay in 2011.C*