

Wondrous West Indian Wetlands

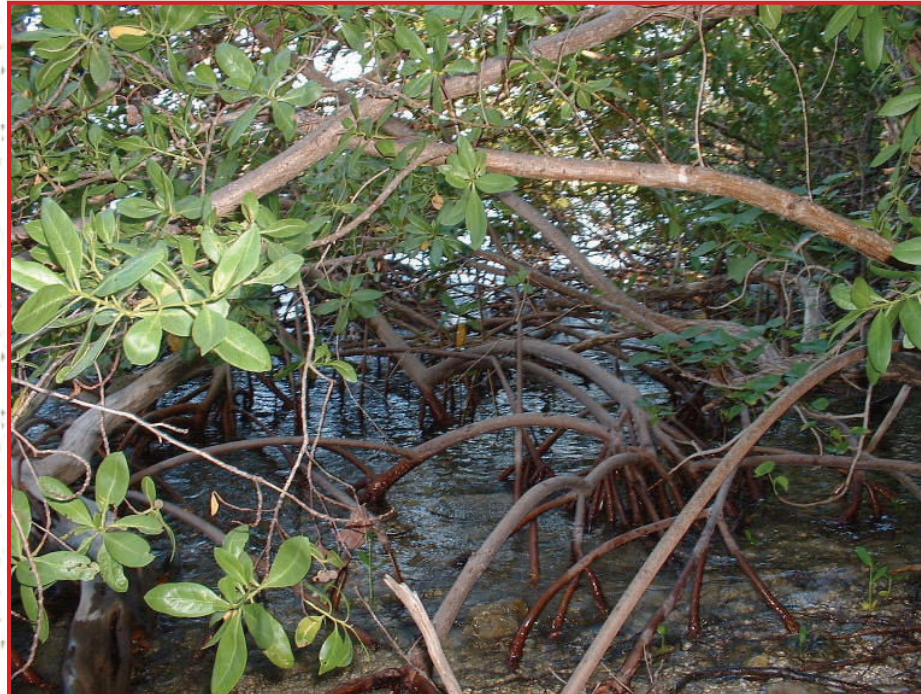
Mangroves of the Caribbean



An Identification Guide

Red Mangrove

(*Rhizophora mangle*)

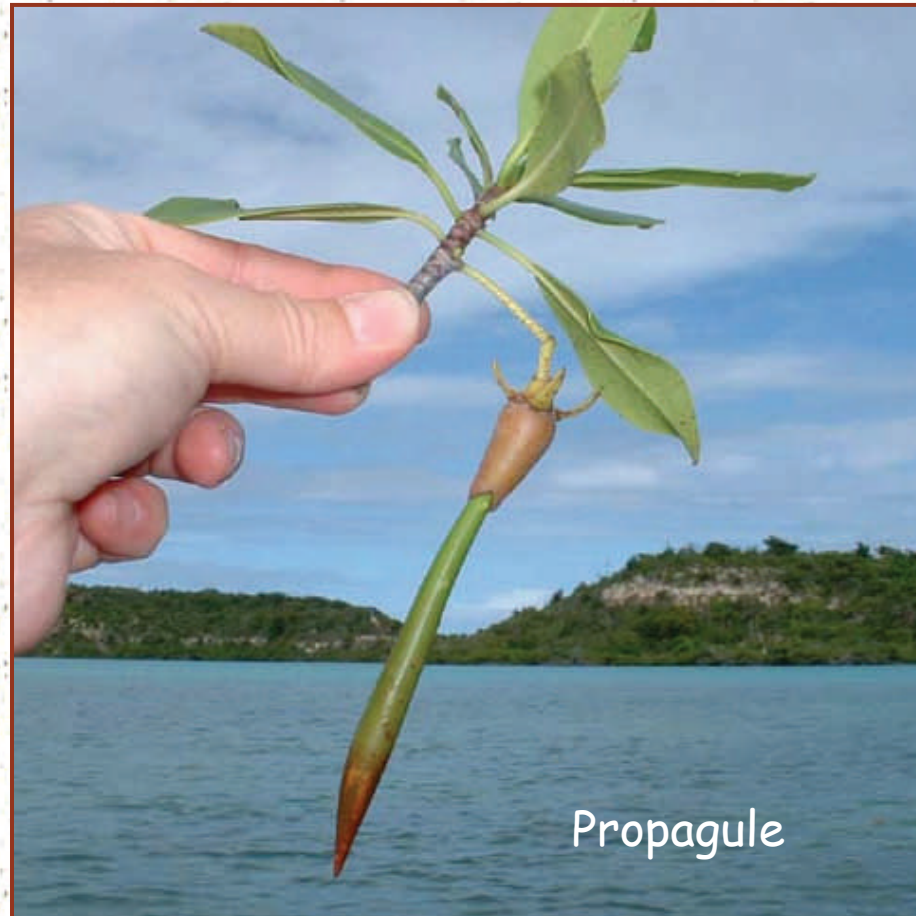


- ◆ Only mangrove with reddish colored arching and branching prop roots
- ◆ Leaves are opposite; large, bright green, leathery, shiny upper surface, rounded
- ◆ Yellow-cream flowers with four pointed petals (yellow sepals, white petals)



Red Mangrove

- ◆ Fruit is oval and brown in color, ~ one inch long
- ◆ Fruit germinates into an elongate, torpedo-like seedling (propagule) while still on the tree





Black Mangrove

(*Avicennia germinans*)



- ◆ Leaves are opposite; long and thin, shiny above, salt crystals on back
- ◆ White flowers
- ◆ Fruit is smooth and flattened; teardrop shaped
- ◆ Long pencil-like pneumatophores (special breathing roots) form a dense carpet around the tree

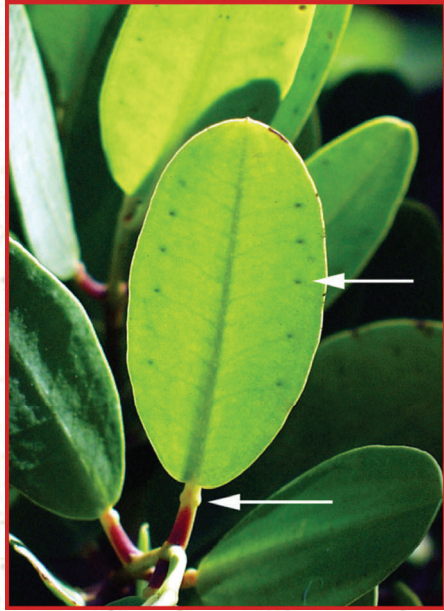


White Mangrove

(*Laguncularia racemosa*)

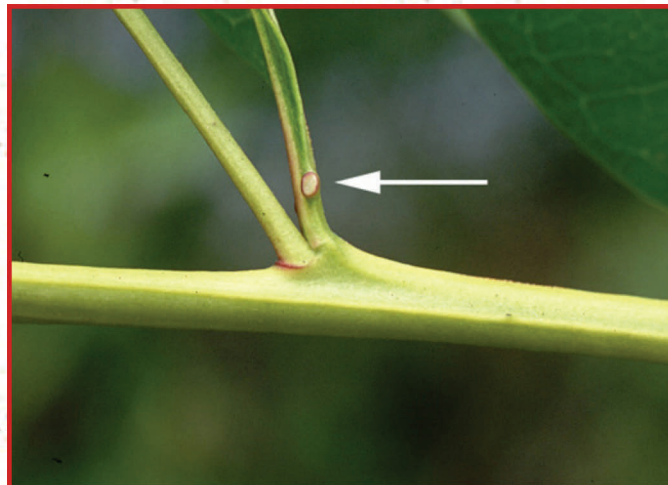


- ◆ Leaves are opposite; rounded, yellow-green in color, sometimes with pinkish stems
- ◆ Small white flowers in a spike
- ◆ Fruit is green, ribbed and in clusters
- ◆ Salt glands at base of leaf



Buttonwood Mangrove

(Conocarpus erectus)





- ◆ Red-brown fruit in clusters; in rounded heads

- ◆ Leaves are alternate; long and thin
- ◆ Very tiny flowers in clusters
- ◆ Salt glands at base of leaf





Bark on mature tree has long vertical furrows between flat, squarish blocks



Bark on mature tree is striated

Notes



Long slender aerial roots of Red Mangrove



White Mangrove trees may have prop roots



© 2005 *Mangroves of the Caribbean* is a publication of the West Indian Whistling-Duck and Wetlands Conservation Project of the Society for the Conservation and Study of Caribbean Birds (www.whistlingduck.org)



Together for birds and people



GEF



UNEP

